

Statutory Document No. 109/06 (Drawing 01 of 2)

IN TYNWALD



LAND DRAINAGE ACT 1934

CATCHMENT MAP OF THE SILVERBURN RIVER (INCLUDING VARIATION OF SILVERBURN RIVER) MAIN RIVER

In pursuance of subsection (3) of section 9 of the Land Drainage Act 1934<sup>1</sup>, as it applies to a catchment area in relation to the variation of extent of the main river:

**Drawing Nos LD/MR5/01 and LD/MR5/02** prepared by the Department of Transport, constituting the Catchment Map of the Silverburn River (including variation of Silverburn River) main river, required to be laid before Tynwald in accordance with subsection (2) of the said section 9 of that Act.

*Laid before Tynwald*

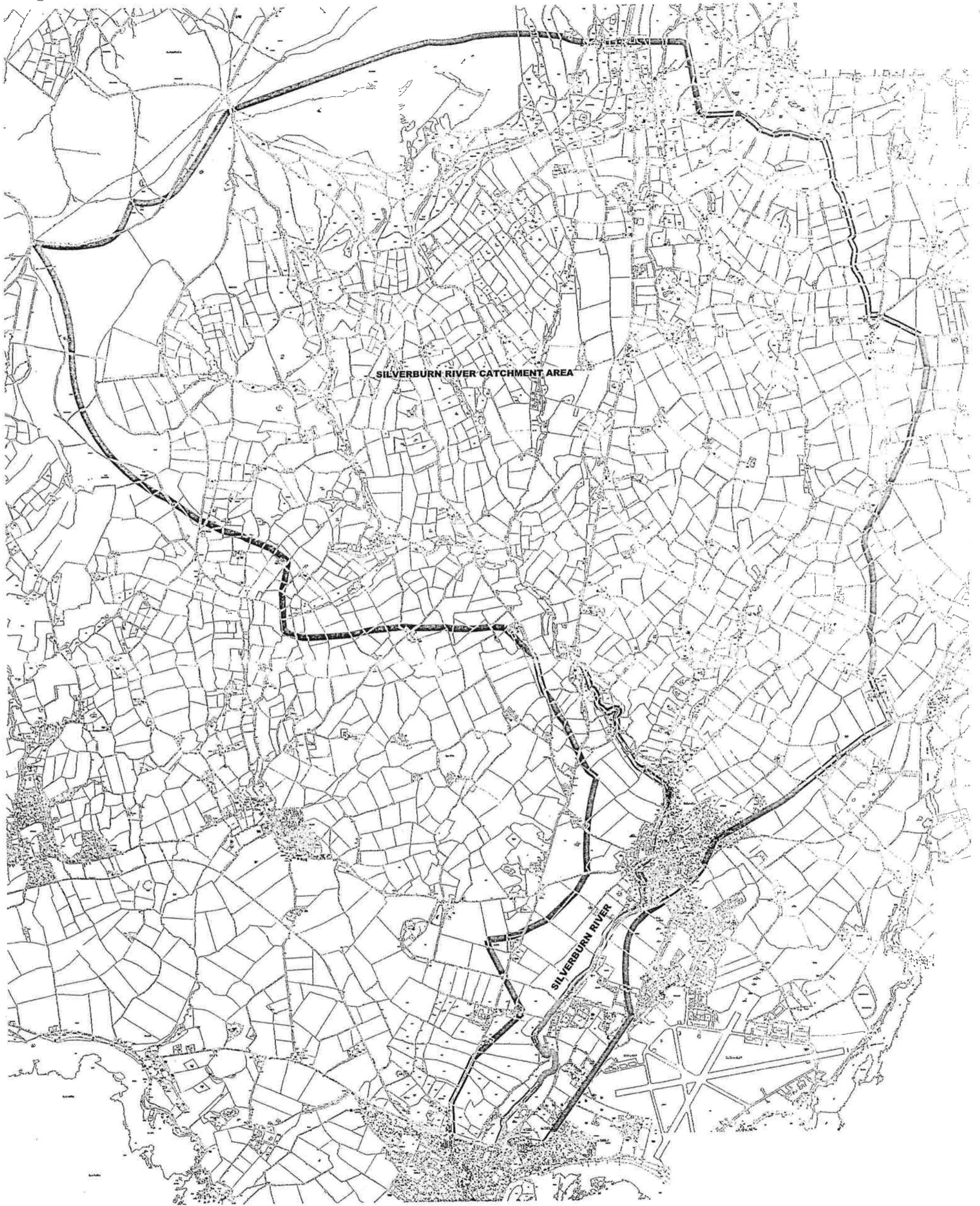
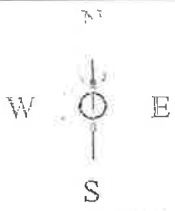
*Map Approved by Tynwald 21 March 2006*

*R. Braidwood*





Minister for Transport

Date *22<sup>nd</sup> FEBRUARY 2006*

<sup>1</sup> Statutes of the Isle of Man Volume XIV page 222



**THE LAND DRAINAGE ACT 1934**  
 SILVERBURN RIVER  
 FOR DETAILS OF RIVER VARIATION SEE DRAWING LD/MR5/02

-  CATCHMENT AREA BOUNDARY COLOURED GREEN
-  EXISTING 'MAIN RIVER' COLOURED BLUE BEING 9.1 METRES EACH SIDE OF RIVER BANK
-  EXISTING EXTENSION TO MAIN RIVER COLOURED RED BEING 10 METRES EACH SIDE OF RIVER BANK
-  PROPOSED MAIN RIVER VARIATION

Ref.	Revision	Date	By

Land Drainage Act 1934  
 Silverburn Main River  
 Catchment Map

Drawn By	SRP	Date	Oct 2004
Checked By		Scale	1:10000
Job Ref	LD/MR5	Drawing No.	LD/MR5/01

Department of Transport  
 Drainage Division  
 Wessborough Rd, Clong, MICE, MCHWIM  
 Director of Drainage

Murray Veg, Balmahowie  
 Station, Isle of Man,  
 IM44 11L

Telephone: (01624) 402501  
 Fax: (01624) 402502  
 Email: [drainage@tdt.gov.im](mailto:drainage@tdt.gov.im)

Client: [www.im.gov.im](http://www.im.gov.im)



IN TYNWALD



LAND DRAINAGE ACT 1934

CATCHMENT MAP OF THE SILVERBURN RIVER (INCLUDING VARIATION OF SILVERBURN RIVER) MAIN RIVER

In pursuance of subsection (3) of section 9 of the Land Drainage Act 1934<sup>1</sup>, as it applies to a catchment area in relation to the variation of extent of the main river:

**Drawing Nos LD/MR5/01 and LD/MR5/02** prepared by the Department of Transport,

constituting the Catchment Map of the Silverburn River (including variation of Silverburn River) main river, required to be laid before Tynwald in accordance with subsection (2) of the said section 9 of that Act.

*Laid before Tynwald*

*Map Approved by Tynwald 21 March 2006*

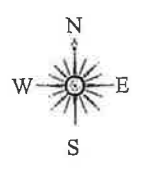
*RB Braidwood*

Minister for Transport

Date *22<sup>nd</sup> FEBRUARY 2006*

<sup>1</sup> Statutes of the Isle of Man Volume XIV page 222





**NOTES**  
**LAND DRAINAGE ACT 1934**  
 Silverburn River

1. ALL LEVELS ARE RELATIVE TO ORDINANCE DATUM
2. ALL COORDINATES ARE TO ORDINANCE SURVEY.

- SILVERBURN RIVER
- EXISTING MAIN RIVER BOUNDARY 30 EACH SIDE OF BANK TOP
- PROPOSED MAIN RIVER VARIATION

- REFERENCE POINT OF PROPOSED MAIN RIVER
- REFERENCE POINT OF PROPOSED EARTH EMBANKMENT AND FLOOD STORAGE AREA
- EXISTING GROUND LEVEL
- PROPOSED GROUND LEVEL
- DATA POINT

- 0.5m HEIGHT OF WALL ABOVE EXISTING G.L. (RIVER SIDE)
- 23.00 LEVEL OF TOP OF WALL A.O.D.
- 0.5m HEIGHT OF WALL ON EAST SIDE (HOUSING SIDE)

POINT	EASTING	NORTHING
A1	227785.484	469908.842
B1	227785.314	469921.473
C1	227772.397	469930.014
D1	227782.278	469930.526
E1	227790.162	469911.986
F1	227796.650	469993.324
G1	227806.918	469987.846
H1	227819.010	469987.007
I1	227803.911	469986.052
J1	227787.454	469980.790
K1	227774.547	469995.635
A2	227893.279	470040.648
B2	227881.273	470042.696
C2	227856.393	470034.447
D2	227858.846	470031.885
E2	227840.504	470015.978
F2	227835.227	470016.997
G2	227830.490	470008.467
H2	227835.424	470007.788
I2	227834.938	469995.743
J2	227830.421	469996.809
K2	227826.348	469998.251
L2	227829.500	469995.342
M2	227814.961	469972.418
N2	227810.997	469975.091
O2	227808.514	469963.838
P2	227812.837	469961.593
Q2	227815.997	469951.827
R2	227811.736	469950.826
S2	227816.654	469941.417
T2	227821.271	469943.319
U2	227844.762	469913.188
V2	227843.264	469910.186
W2	227853.658	469887.426
X2	227830.220	469854.747
Y2	227817.253	469851.854
Z2	227812.280	469849.224

Ref.	Revision	Date	B	h.k.

**Department of Transport**  
*Rheynn Arraghey*

**DRAINAGE DIVISION**  
 P. Winstanley, B Eng, C Eng, MICE, MCIWEM  
 Director of Drainage

Meary Veg, Balnahove  
 Douglas, Santon, Isle of Man  
 IM4 1HL

Telephone: (01624) 693501  
 Fax: (01624) 693502  
 Email: enquiries@drainage.dot.gov.im

Job Title  
**Land Drainage Act 1934**  
**Silverburn Main River**

Drawing Title  
**Main River Variation**

Drawn By	SRP	Date	Oct 200
Checked By		Scale	1:500
Job Ref	LD/MR5	Drawing No	LD/MR 5/02
		Rev.	

